

MGA-ES-20/MGA-ES-20H STACKER FORKLIFT



STABILITY:

- The large and strong chassis ensures sufficient stability of the forklift.
- The max lifting height can reach 9.5 metres.
- Use "H" type mast steel is imported Germany enhance the use time and stability.
- Large and comfortable compartment with adjustable seat reflects a concept of ergonomic design.
- Use double controllers to realize stepless speed regulation of both lifting and travelling.

SAFETY AND HIGH EFFICIENCY:

- Have safety travelling speed limited device in the mast. Travelling speed will automatic lowering when forks height up 5M.
- Full hydraulic steering system makes turning easy and flexible.
- Adopts hydraulic brake for two front wheel and electric brake for driving motor, offer simple operation for travelling and braking.
- Integrated design of driving and steering system without chain transmission, resolve the problem of chain fall-of caused by chain transmission.

EASY MAINTENANCE:

- Battery changing offers two type methods:
- Sideway battery changing by a trolley.
- Automatic push-out and pull-in function by a simple battery handle controller.
- Bolt fixed back cover is easy to open for daily maintenance.

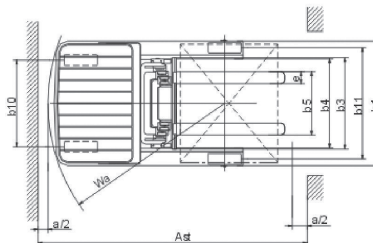
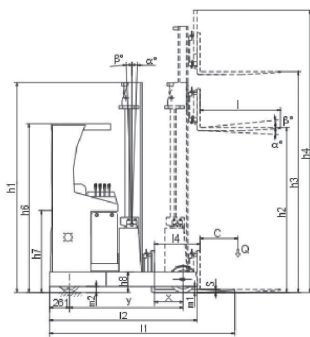
OPTION:

- Joystick hydraulic controller.
- LCD display and camera (LCD for cold storage are available).
- Height selection and height position system.



CURTIS AC CONTROLLER
(MADE IN USA)

	MGA-ES-20	MGA-ES-20H
■ POWER TYPE	ELECTRIC	ELECTRIC
■ RATED CAPACITY (KG)	2000	2000
■ BATTERY (V/AH)	24/200	24/240



MODEL		MGA-ES-20				MGA-ES-20H		
Power		Electric				Electric		
Operation type		Seated				Seated		
Capacity / rated load	Q(kg)	2000				2000		
Lifting height	h3(mm)	3000	5000	6200	7400	8000	8600	9500
Load centre distance	c(mm)	500				500		
Load distance, centre of drive axle to fork	x(mm)	380				320		
Wheelbase	Y(mm)	1500				1500		
Service weight	kg	3300	3700	3800	3900	4100	4150	4240
Axle loading, unladen front/rear	kg	2190/1110	2400/1300	2440/1360	2480/1420	2500/1600	2540/1610	2580/1660
Axle loading, fork advanced, laden front/rear	kg	745/4555	845/4855	893/4907	942/4958	673/5427	714/5436	786/5454
Axle loading, fork retracted, laden front/rear	kg	2033/3267	2244/3456	2284/3516	2324/3576	2266/3834	2305/3845	2346/3894
Tyres type		PU wheel				PU wheel		
Drive wheel	mm	Φ 406x152				Φ 406x152		
Fork wheel	mm	Φ 340x104				Φ 340x104		
Wheels, number front rear (x=driven wheels)		2,1				2,1		
Tread,front	b10(mm)	~				~		
Tread,rear	b11(mm)	1130				1350		
Tilt of mast/fork carriage forward/backward	α,β (Grad)	2,2 (mast)				3,5 (forks)		
Height, mast lowered	h1(mm)	2086	2240	2740	3190	3390	3590	3890
Free lift	h2(mm)	~	1700	2100	2500	2700	2900	3200
Height, mast extended	h4(mm)	3800	5800	7000	8200	8800	9400	10300
Height of overhead guard (cabin)	h6(mm)	2200				2200		
Seat height/stand height	h7(mm)	1068				1068		
Height of crura	h8(mm)	270				270		
Overall length	l1(mm)	2440				2510		
Length (barring fork)	l2(mm)	1950				1950		
Overall width	b1(mm)	1260				1510		
Fork dimensions	s/e/l(mm)	40/120/1070				40/120/1070		
Fork carriage DIN 15173, class/type A,B		A				A		
Fork-carriage width	b3(mm)	928				928		
Distance between fork -arms	b5(mm)	640				780		
Distance between support arms/loading surfaces	b1(mm)	900				1090		
Reach distance	l1(mm)	600				600		
Ground clearance,laden,below mast	m1(mm)	90				90		
Ground clearance,centre of wheelbase	m2(mm)	80				80		
Aisle width for pallets 1000x1200 crossways	Ast(mm)	2880				2880		
Aisle width for pallets 800x1200 lengthways	Ast(mm)	2930				2930		
Turning radius	Wa(mm)	1820				1820		
Travel speed,laden/unladen	Km/h	8/8.3				8/8.3		
Lift speed,laden/unladen	m/s	0.19/0.2				0.19/0.2		
Lowering speed,laden/unladen	m/s	0.5/0.4				0.5/0.4		
Reaching speed,laden/unladen	m/s	0.1/0.1				0.1/0.1		
Gradeability,laden/unladen	%	10,12				10,2		
Acceleration time,laden/unladen	s	4,8,4,3				4,8,4,3		
Service brake		hydraulic				hydraulic		
Battery voltage,nominal capacity K5	V/Ah	48/500				48/500		
Battery weight	Kg	860				860		
Battery dimensions l/w/h	Mm	1220x344x727				1220x344x727		
Type of drive control		DC/AC				DC/AC		
Operating pressure for attachments	bar	140	160	160	160	170		
Sound level at the driver's ear acc.to DIN 12053	dB(A)	70				70		

MGA FORKLIFT INC. (USA)

Address: 8450 Garvey Avenue Suite 230, Rosemead, CA91770, USA.
 Web: www.mgaforklift.com Mail: sales@mgaforklift.com

FACTORY: MGA VIETNAM CO., LTD.

Address: 1/2/5 Giang Van Minh, An Phu Ward, District 2, HCMC, Vietnam
 Tel: (+84-8) 3519 4286-87-88 Fax: (+84-8) 3519 4289
 Web: www.mgavietnam.com Mail: sales@mgavietnam.com

For more information on our products, please visit



Specifications and design are subject to change without prior notice.
 Machines shown may not include optional accessories.

MGA HEAVY MACHINERY ASIA PTE LTD (SINGAPORE)

Address: 50 Tagore Lane #05-07 Entrepreneur Centre Singapore 787494
 Tel: (+65) 6511 4583 Fax: (+65) 6511 2969
 Web: www.mgahmasia.com Mail: sales@mgahmasia.com